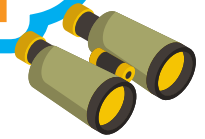




# EXPLORER'S CAMP



## AT FAIRVIEW SCHOOL

GENERAL QUESTIONS? CONTACT KIMBERLY BARTON: KBARTON@HEPARKS.ORG • (847)285-5535

### DAILY SCHEDULE



**On-site Camp Day –**  
games, activities  
and crafts



**On-site Camp Day –**  
Seascape pool  
in the afternoon



**On-site Camp Day –**  
Seascape pool  
in the afternoon



#### Field Trips



Field trips are held  
on Thursdays unless  
another date is noted.



**On-site Camp Day –**  
games, activities  
and crafts

### FIELD TRIPS

#### WEEK 1 – JUNE 8

Enchanted Castle 🍷

#### WEEK 2 – JUNE 14

Chicago Dogs 🍷

#### WEEK 3 – JUNE 22

Lazer X 🍷

#### WEEK 4 – JUNE 22

Wheeling Water Park

#### WEEK 5

No Camp



#### WEEK 6 – JULY 13

Ultimate Ninja Libertyville

#### WEEK 7 – JULY 20

Bowlero 🍷

#### WEEK 8 – JULY 27

Atcher Island

#### WEEK 9 – AUGUST 3

Rainbow Falls



BRING A  
SACK LUNCH



SIGNED WAIVER  
REQUIRED



LUNCH  
INCLUDED



BRING  
WATER



POOL DAY!  
BRING SWIMSUIT  
AND TOWEL



BRING  
SUNSCREEN



# EXPLORER'S CAMP

## AT LINCOLN PRAIRIE SCHOOL



GENERAL QUESTIONS? CONTACT KIMBERLY BARTON: KBARTON@HEPARKS.ORG • (847)285-5535

### DAILY SCHEDULE

M

On-site Camp Day –  
games, activities  
and crafts

T

On-site Camp Day –  
Seascape pool  
in the afternoon

W

Field Trips

Field trips are held on  
Wednesdays unless  
another date is noted.

TH

On-site Camp Day –  
games, activities  
and crafts

F

On-site Camp Day –  
Seascape pool  
in the afternoon

### FIELD TRIPS

WEEK 1 – JUNE 7   
Enchanted Castle

WEEK 2 – JUNE 14   
Chicago Dogs

WEEK 3 – JUNE 21   
Lazer X

WEEK 4 – JUNE 28  
Wheeling Water Park

WEEK 5 – JULY 5  
Lincoln Park Zoo

WEEK 6 – JULY 12  
Ultimate Ninja Libertyville

WEEK 7 – JULY 19   
Bowlero

WEEK 8 – JULY 26  
Atcher Island

BRING A SACK LUNCH

SIGNED WAIVER REQUIRED

LUNCH INCLUDED

BRING WATER

POOL DAY!  
BRING SWIMSUIT AND TOWEL

BRING SUNSCREEN

# EXPLORER'S CAMP

## AT WILLOW RECREATION CENTER



GENERAL QUESTIONS? CONTACT KIMBERLY BARTON: KBARTON@HEPARKS.ORG • (847)285-5535

### DAILY SCHEDULE

M

On-site Camp Day –  
games, activities  
and crafts

T

Field Trips

Field trips are held on  
Tuesdays unless  
another date is noted.

W

On-site Camp Day –  
Seascape pool  
in the afternoon

TH

On-site Camp Day –  
games, activities  
and crafts

F

On-site Camp Day –  
Seascape pool  
in the afternoon

### FIELD TRIPS

WEEK 1 – JUNE 6   
Enchanted Castle

WEEK 2 – JUNE 14 (WEDS)   
Chicago Dogs

WEEK 3 – JUNE 19 (MON)  
Lazer X

WEEK 4 – JUNE 27  
Wheeling Water Park

WEEK 5 – JULY 5  
Lincoln Park Zoo

WEEK 6 – JULY 11  
Ultimate Ninja Libertyville

WEEK 7 – JULY 18   
Bowlero

WEEK 8 – JULY 25  
Atcher Island

WEEK 9 – AUGUST 2  
Rainbow Falls (WEDS)

BRING A SACK LUNCH

SIGNED WAIVER REQUIRED

LUNCH INCLUDED

BRING WATER

POOL DAY!  
BRING SWIMSUIT AND TOWEL

BRING SUNSCREEN

# EXPLORER'S CAMP

AT WHITELEY SCHOOL

GENERAL QUESTIONS? CONTACT KIMBERLY BARTON: KBARTON@HEPARKS.ORG • (847)285-5535

## DAILY SCHEDULE

M

On-site Camp Day –  
games, activities  
and crafts

T

On-site Camp Day –  
Seascape pool  
in the afternoon

W

On-site Camp Day –  
Seascape pool  
in the afternoon

TH

On-site Camp Day –  
games, activities  
and crafts

F

Field Trips

Field trips are held on  
Tuesdays unless  
another date is noted.



## FIELD TRIPS

WEEK 1 – JUNE 9  
Enchanted Castle

WEEK 2 – JUNE 14 (WEDS)  
Chicago Dogs

WEEK 3 – JUNE 23 (MON)  
Lazer X

WEEK 4 – JUNE 30  
Wheeling Water Park

WEEK 5 – JULY 7  
Lincoln Park Zoo

WEEK 6 – JULY 14  
River Trails Parkour

WEEK 7 – JULY 21  
Bowlero

WEEK 8 – JULY 28  
Atcher Island



BRING A  
SACK LUNCH



SIGNED WAIVER  
REQUIRED



LUNCH  
INCLUDED



BRING  
WATER



POOL DAY!  
BRING SWIMSUIT  
AND TOWEL



BRING  
SUNSCREEN



# STEAM CAMP

AT WHITELEY SCHOOL

GENERAL QUESTIONS? CONTACT KIMBERLY BARTON: KBARTON@HEPARKS.ORG • (847)285-5535

## DAILY SCHEDULE

M

On-site Camp Day –  
Seascape pool  
in the afternoon

T

On-site Camp Day –  
games, activities  
and crafts

W

On-site Camp Day –  
Seascape pool  
in the afternoon

TH

Field Trips

Field trips are held  
on Thursdays.



F

On-site camp day –  
games, activities  
and crafts

## FIELD TRIPS

WEEK 1 – JUNE 8  
Field Museum

WEEK 2 – JUNE 15  
Adler Planetarium

WEEK 3 – JUNE 22  
Star Cinema- Elemental  
*Popcorn Included!*

WEEK 4 – JUNE 29  
Atcher Island

WEEK 5  
No Camp

WEEK 6 – JULY 13  
Museum of Science and Industry



WEEK 7 – JULY 20  
Parkour

WEEK 8 – JULY 27  
Phillips Zoo



BRING A  
SACK LUNCH



SIGNED WAIVER  
REQUIRED



LUNCH  
INCLUDED



BRING  
WATER



POOL DAY!  
BRING SWIMSUIT  
AND TOWEL



BRING  
SUNSCREEN





# SPORTS CAMP

AT CHURCHILL ELEMENTARY



GENERAL QUESTIONS? CONTACT KIMBERLY BARTON: KBARTON@HEPARKS.ORG • (847)285-5535

## DAILY SCHEDULE

M



On-site camp day –  
Seascape pool  
in the afternoon

T



On-site camp day –  
with variety of  
sports and activities

W



Field Trips  
Field trips are held  
on Wednesdays.



TH



On-site camp day –  
Seascape pool  
in the afternoon

F



HEParks  
Field Trips



## FIELD TRIPS

WEEK 1

JUNE 5

JUNE 7

The Club at Poplar Creek – climbing  
The Forge

WEEK 2

JUNE 12

JUNE 14

Black Bear Park – disc golf  
Rainbow Falls

WEEK 3

JUNE 19

JUNE 21

Triphahn Center – ice skating  
Kane County Cougars

WEEK 4

JUNE 26

JUNE 28

ESports Zone – esports  
Atcher Island

WEEK 5

No Camp

WEEK 6

JULY 10

JULY 12

Black Bear Park – disc golf  
Parkour

WEEK 7

JULY 17

JULY 19

Bridges of Poplar Creek – golf  
Pirate's Cove

WEEK 8

JULY 24

JULY 26

Bridges of Poplar Creek  
Powered by Top Tracer Range  
Schaumburg Boomers



BRING A  
SACK LUNCH



SIGNED WAIVER  
REQUIRED



LUNCH  
INCLUDED



BRING  
WATER



POOL DAY!  
BRING SWIMSUIT  
AND TOWEL



BRING  
SUNSCREEN



# TEEN CAMP

AT CHURCHILL SCHOOL  
& WILLOW RECREATION CENTER



GENERAL QUESTIONS? CONTACT KIMBERLY BARTON: KBARTON@HEPARKS.ORG • (847)285-5535

## DAILY SCHEDULE

M



HEParks  
Field Trips



T



On-site camp day  
with cooking activity

W



On-site camp day  
Seascape pool  
in the afternoon

TH



On-site camp day  
Seascape pool  
in the afternoon

F



Field Trips  
Field trips are held  
on Fridays.



WEEK 1

JUNE 5

JUNE 9

Bridges of Poplar Creek – golf  
Rainbow Falls

WEEK 2

JUNE 12

JUNE 16

The Club at Poplar Creek – climbing  
Mish Mash Adventure  
*Bring lunch money!*



WEEK 3

JUNE 19

JUNE 23

Black Bear Park – disc golf  
Gilsen Beach

WEEK 4

JUNE 26

JUNE 30

Triphahn Center – ice skating  
Puttshack

WEEK 5

No camp

WEEK 6

JULY 10

JULY 14

ESports Zone – esports  
Atcher Island

WEEK 7

JULY 17

JULY 21

Fabbrini Park – fishing  
Bowlero

WEEK 8

JULY 24

JULY 28

Bridges of Poplar Creek  
Powered by Top Tracer Range  
Mystic Waters



BRING A  
SACK LUNCH



SIGNED WAIVER  
REQUIRED



LUNCH  
INCLUDED



BRING  
WATER



POOL DAY!  
BRING SWIMSUIT  
AND TOWEL



BRING  
SUNSCREEN



# CREATIVE ARTS CAMP

## AT WILLOW RECREATION CENTER

GENERAL QUESTIONS? CONTACT KIMBERLY BARTON: KBARTON@HEPARKS.ORG • (847)285-5535

### DAILY SCHEDULE

M



On-site camp day –  
with variety of  
activities

T



On-site camp day –  
with variety of  
activities

W



On-site camp day –  
with variety of  
activities

TH



On-site camp day –  
with variety of  
activities

F



On-site camp day –  
Seascape pool  
in the afternoon



### WEEK 4 FIELD TRIP

JUNE 28 ESports Zone – esports



BRING A  
SACK LUNCH



SIGNED WAIVER  
REQUIRED



LUNCH  
INCLUDED



BRING  
WATER



POOL DAY!  
BRING SWIMSUIT  
AND TOWEL



BRING  
SUNSCREEN

